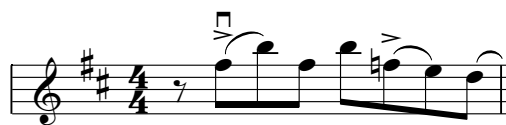


Grappelli Improvisation No. 3

Playalong track 23
Medium swing



Musical score for Grappelli Improvisation No. 3, featuring a treble clef, key signature of two sharps (F# and C#), and a 4/4 time signature. The score is divided into measures 1 through 32, with measure numbers in boxes at the start of each line. Chords are indicated above the notes, and fingerings are shown below. Performance instructions include accents (>), vibrato (vib), and breath marks (v). Measure numbers 1, 2, 3, 4, and 7 are used for counting or grouping notes.

Measures 1-4: Chords D, Em7, A7, D. Fingerings: 1, 2, 1, 2, 1.

Measures 5-8: Chords D, D7, G, G#07, A7, D. Fingerings: 1, 2, 1, 2, 1.

Measures 9-12: Chords D, Em7, A7, D. Fingerings: 3, 4, 1, 1, 3, 1.

Measures 13-16: Chords D, D7, G, G#07, A7, D. Fingerings: 2, 2, 1, 2, 1.

Measures 17-20: Chords Eb, Fm7, Bb7, Eb, Fm7, Bb7. Fingerings: 1, 2, 1, 2, 1.

Measures 21-24: Chords Eb, Fm7, Bb7, Eb, A7. Fingerings: 1, 2, 1, 2, 1.

Measures 25-28: Chords D, Em7, A7, D, Em7, A7. Fingerings: 2, 2, 0, 1, 1, 1.

Measures 29-32: Chords D, D7, G, G#07, A7, D. Fingerings: 4, 4, 3, 2, 1, 4, 3, 2, 1, 4.

Grappelli Improvisation based on the chords in 'Daphne'.
Recorded 1938 - CD "Django Reinhardt Complete Vol. 7 - Christmas Swing" (Frémeaux)